

Coloring Pages and Treasure Map

by Laura Sams, illustrations by Heiner Hertling

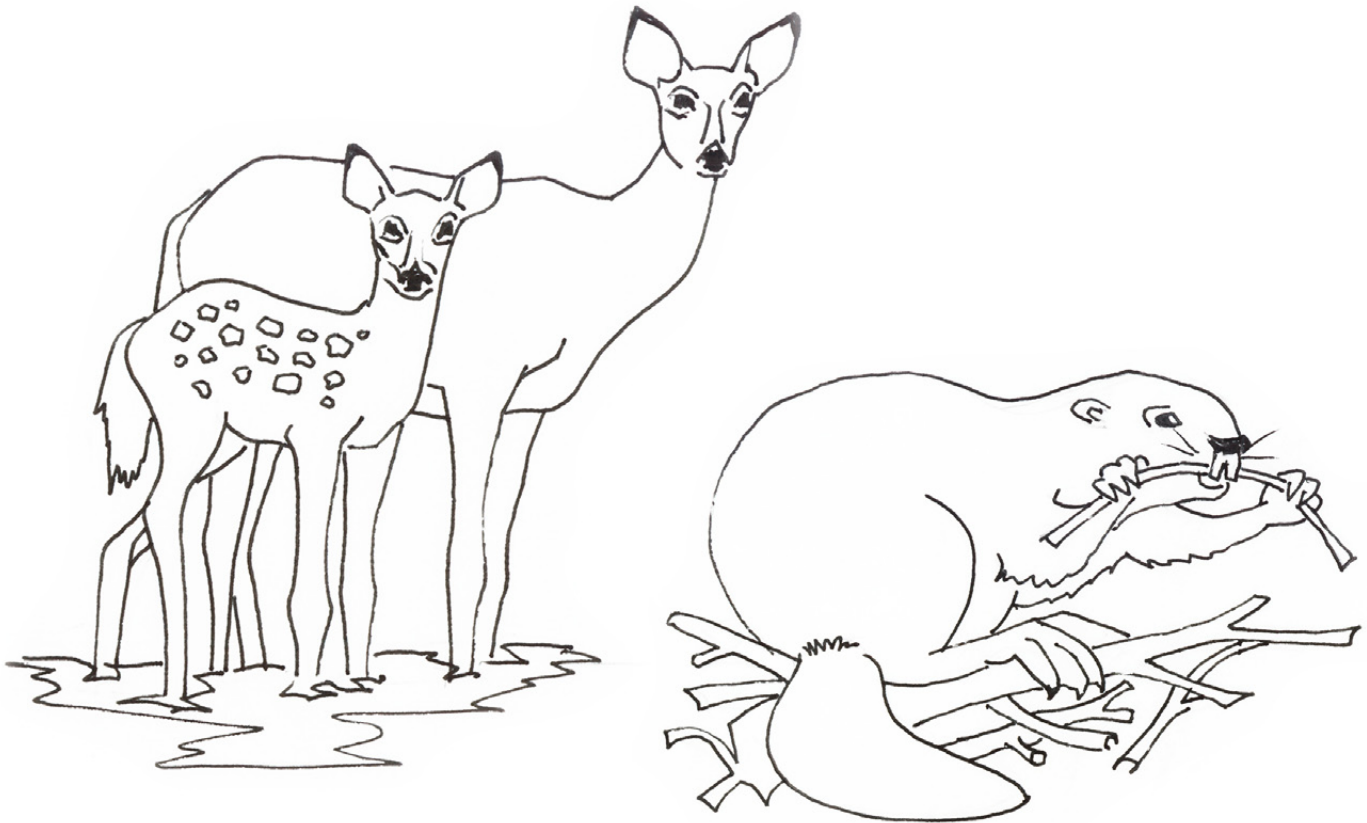
The following pages are based on the paintings from *A Pirate's Quest (for his family heirloom peg leg)*. You'll see white-tailed deer, a beaver, a ghost crab (with a pirate ship cookie), the one-legged pirate, a treasure chest (full of cookies), a bottlenose dolphin, a mahi-mahi and roseate spoonbills.

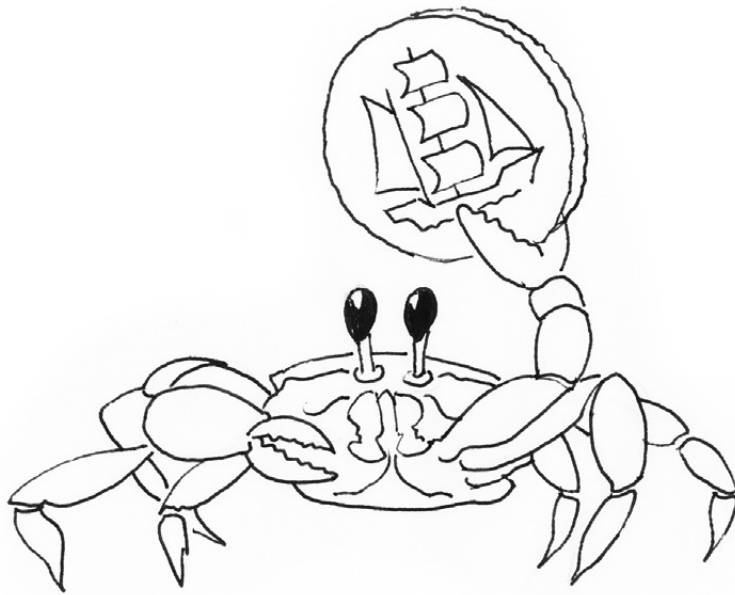
Treasure Map for Reaching Goals

Give students the peg leg treasure map and use it to help reach different goals (reading goals, behavior goals, math goals, etc). Students may begin by coloring the pond. If students reach a certain set goal (number of pages read, good behavior days, etc.), they can follow the path to the deer and color them. After reaching another goal, students can move to the beaver, the treasure chest, the spoonbills, the dolphin, the mahi-mahi, the ghost crab, etc. After reaching the final goal, students will finally reach their lost peg leg! As another variation, copy the image of the one-legged pirate in his boat. Students can color their own pirate and move the pirate along the treasure map.

Pirate's Quest Headbands

Cut strips of construction paper to make paper headbands for students. Let students choose an image to color and glue to his or her headband.

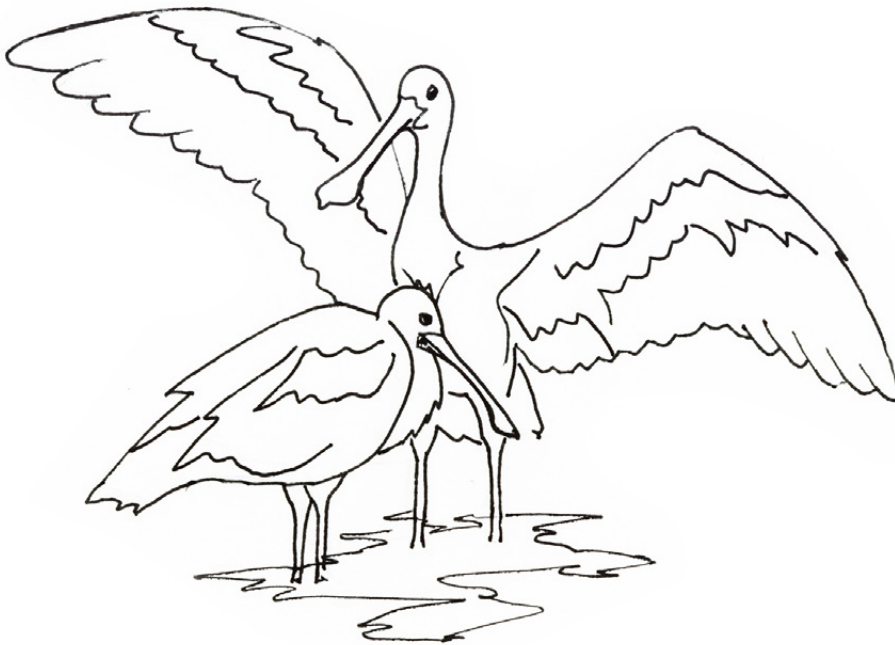
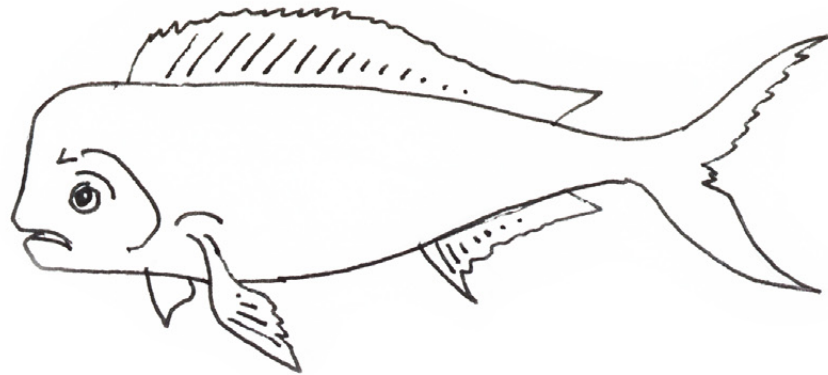
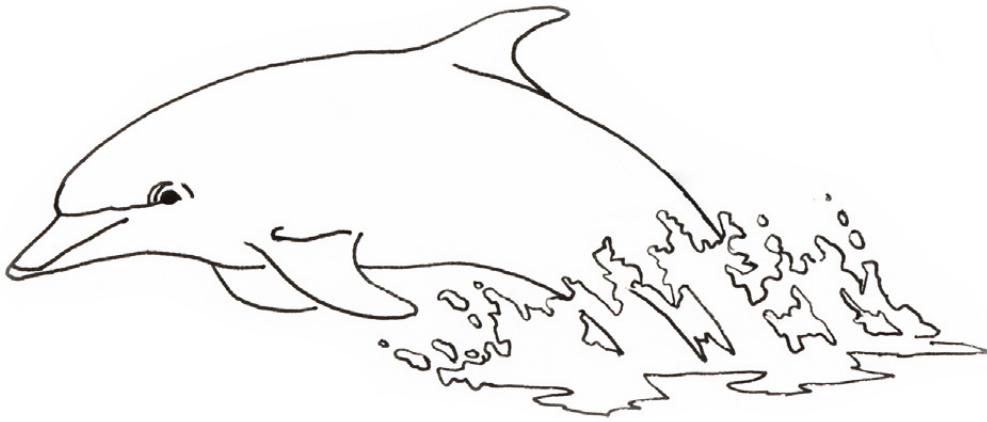




www.apiratesquest.com

A Pirate's Quest, by Laura Sams, Robert Sams, Heiner Hertling *The Riddle in a Bottle*, by Sisbro Studios
Published by Carl R. Sams II Photography, Inc. (800) 552-1867





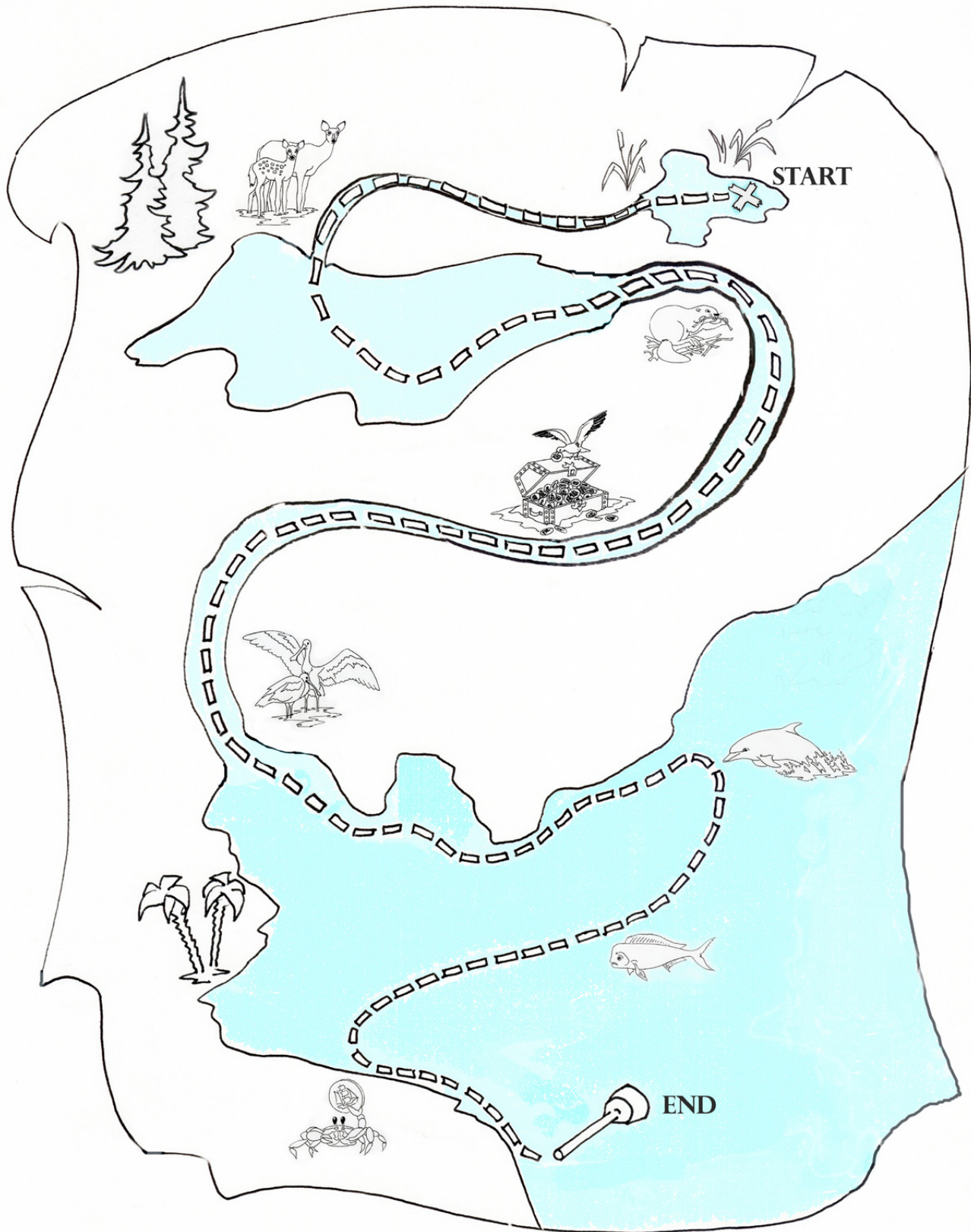
www.apiratesquest.com

A Pirate's Quest, by Laura Sams, Robert Sams, Heiner Hertling *The Riddle in a Bottle*, by Sisbro Studios
Published by Carl R. Sams II Photography, Inc. (800) 552-1867



'ME PEG LEG TREASURE MAP

FOLLOW THE MOVING WATER UNTIL YOU REACH YOUR PEG LEG!



www.apiratesquest.com

A Pirate's Quest, by Laura Sams, Robert Sams, Heiner Hertling *The Riddle in a Bottle*, by Sisbro Studios
Published by Carl R. Sams II Photography, Inc. (800) 552-1867

